



**PMHS PTA**

**JUNIOR LEAGUE OF PELHAM**

**HOUSE &**

**HISTORY TOUR**

**SUNDAY APRIL 26, 2026**



This special community event and important fundraiser could not happen without the generosity of our homeowners who have graciously opened their doors and invited us in today.

With gratitude to Ms. Devon Fallon and her Pelham Memorial High School art students: Caitlin Brant, Sadie Ashlock, Eva Lestari Stinger, Milly Deighton & Sophia Riviello.

## **A Note from the Co-Chairs**

Welcome to the 2026 House & History Tour!

This year, we celebrate the 32nd anniversary of the Pelham House & History Tour. Founded in 1994, the Pelham House & History Tour began as a fundraising event for the Pelham Memorial High School (PMHS) PTA. In 2019, the Junior League of Pelham (JLP) joined forces with the PMHS PTA to continue this cherished tradition, celebrating both the town's beautiful homes and its rich history.

The House & History Tour is truly a community event, bringing neighbors together to celebrate Pelham's beauty, history, and spirit. Five families have graciously opened their homes to the Pelham community to support programming for the PMHS PTA and the JLP. More than 350 guests will admire a diverse range of architecture and interior design, explore new corners of Pelham, and discover historical landmarks throughout the town.

We are deeply grateful to the homeowners for opening their doors to the community today. We thank our Premier, Turn Key, Historical, Touring, and Program Listing sponsors, all of whom understand the importance of giving back to the community. We hope you support these local businesses in appreciation.

Our sincere thanks go to the House Captains and Docent Volunteers for warmly welcoming guests and sharing insights about each of the special homes, and Pelham Town Historian, Art Scinta, for the hours spent researching and writing new historical highlights. We are also grateful to PMHS art students for creating original works of art for each of the homeowners, and to the PMHS musicians for sharing their talents at many of the homes.

Finally, we thank our House & History Tour Committee Members – Susan Quintin, Merrell Quintin, Julia Wolf, Alison Wiesenmaier, and Michele Egan – for their dedication in making this year's Tour a success.

Wave to your neighbors and enjoy the Tour,

Lynda Banfield, Junior League of Pelham  
Melissa Mulrooney Deighton, Junior League of Pelham  
Dave Sparano, Pelham Memorial High School PTA  
Marcos Rollan, Pelham Memorial High School PTA



**Show Homes  
Sunday April 26, 1-4pm**

**1**

**Reimagined Home in Chester Park**  
30 Linden Avenue  
Steven Showalter and Jeff Davis

**2**

**Unique Victorian in the Heights**  
215 Loring Avenue  
Ashley and JC Mills

**3**

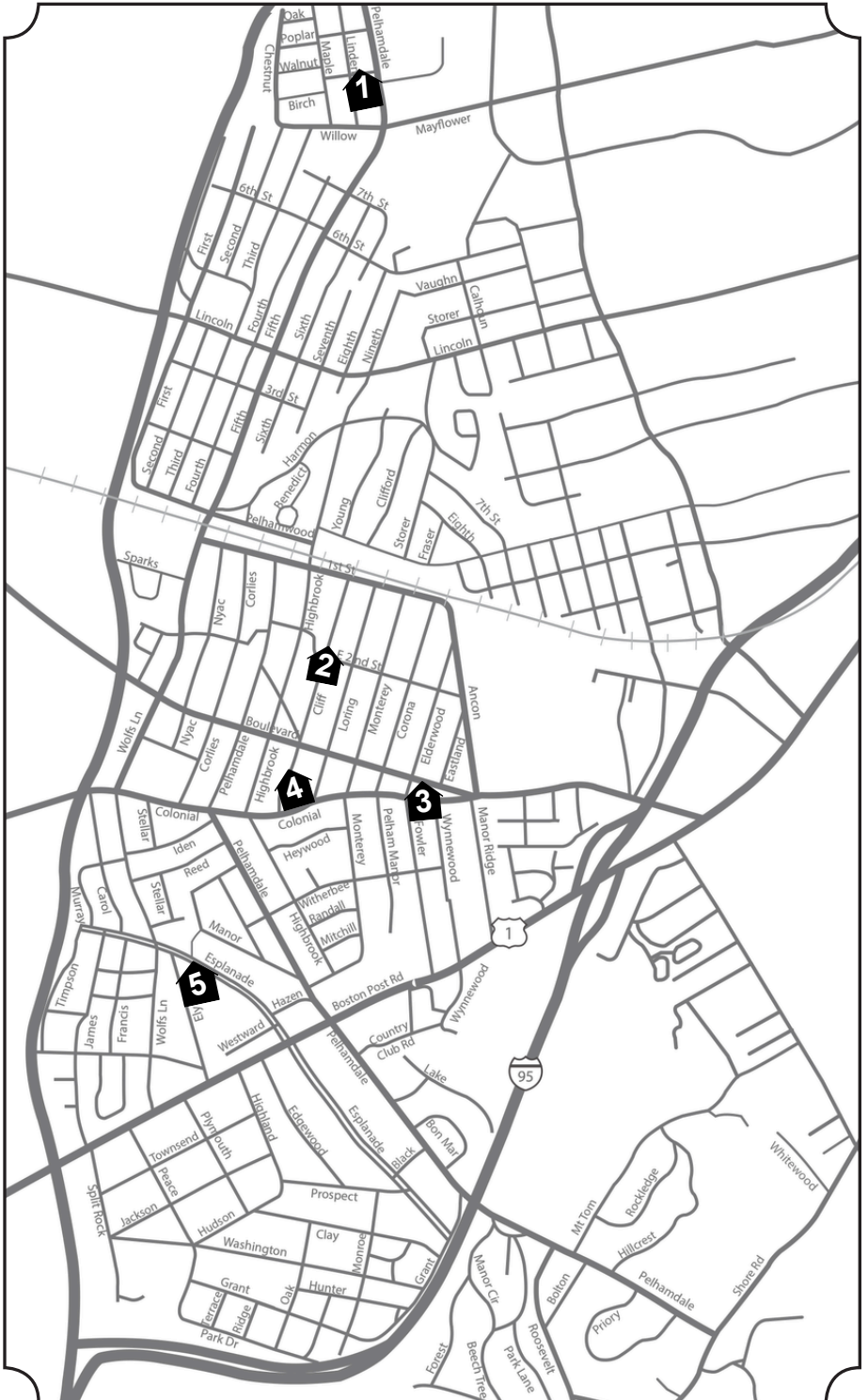
**Charmer in the Manor**  
427 Fowler Avenue  
Lauren and Rob Kanzer

**4**

**Historical Edwardian on the Cliff**  
328 Cliff Avenue  
Erica and Andrew Holborn

**5**

**Home of a Legend**  
620 Ely Avenue  
Christine Kaculis and Josh Weinman





For more information about the art collection at 30 Linden Avenue, scan the QR code.

# 1

## Reimagined Home in Chester Park

30 Linden Avenue

Steven Showalter and Jeff Davis

Steven Showalter and Jeff Davis were initially searching in one of Westchester's coveted River Towns when they discovered 30 Linden Avenue and immediately fell for its striking, modern interpretation of a century-old home.

Originally built in 1924, this Chester Park residence had remained in the same family for nearly a century before falling into disrepair. In 2023, a comprehensive renovation led by KO Construction reimagined the property, creating the perfect foundation for its next chapter. The transformation introduced all-new windows and replaced the former gray shingle siding with a crisp white façade accented by bold black trim. Refined stonework and clean landscaping enhance the home's curb appeal, while a welcoming front porch sets a warm and inviting tone.

Later that year, Showalter and Davis brought their own vision to the interiors, infusing the space with a strong sense of artistry and life. On the main level – featuring the living room, dining room, kitchen, and half bath – carefully curated artwork serves as a focal point, adding depth and narrative throughout. A lush collection of plants weaves through the space, introducing vibrancy, texture, and movement.

Upstairs, the second floor features a thoughtfully arranged layout, including their son's bedroom, a guest room, a full bath, and a serene primary suite with an en-suite bath. The lower level expands the living space further, featuring a fourth bedroom, office, exercise room, and an additional bath, along with direct access to two newly added backyard patios. Altogether, the home is a thoughtful blend of historic charm and modern design, brought back to life through expressive interiors rich in art, color, and natural elements.

**Historical Note:** In the 19th century, the current site of Chester Park was owned by John Coutant, a member of the early Huguenot family. It was later owned by William and Elizabeth Standen, whose house, "The Homestead" was near present-day Pine Street, between Maple and Pelhamdale. In 1891, the Standens subdivided their property into 86 lots and a public green and named the neighborhood Chester Park, supposedly in honor of President Chester A. Arthur. Homeowners were expected to maintain their land as individual residential parcels and to contribute to the upkeep of the green. The Chester Park Association was formed in 1912. Although the final lot was sold in 1921, the last homes were not built until after World War II, when part of the old Schaub farm (where the Standen house previously stood) was finally developed.



## 2

### Unique Victorian in the Heights

215 Loring Avenue  
Ashley and JC Mills

Built circa 1900, this remarkable Shingle-Style residence embodies the graceful transition between the late Victorian and early Colonial Revival periods. Its striking brick and wood exterior is complemented by a sweeping wrap-around porch, offering both architectural charm and an inviting presence. Rich in character, the home showcases hallmark features of the era, including soaring ceilings that emphasize verticality and formal room separation instead of an open floor plan.

Inside, the craftsmanship is immediately evident in the extensive millwork and detailed trim, including elegant wood wainscoting that lines the lower walls. A decorative staircase with turned spindles serves as a focal point, reflecting the exceptional woodworking typical of the period. Five original fireplaces—once essential before the advent of central heating—add warmth and historic charm. Beautiful bay windows, including a distinctive curved bay wall, flood the home with natural light while creating an inviting sitting niche. Leaded and stained glass accents, featuring geometric patterns and decorative medallions, further highlight the home's late Victorian artistry.

Spanning 4,918 square feet, the residence offers six bedrooms and four bathrooms, thoughtfully arranged across multiple levels. The second floor features a spacious primary suite with an en-suite bath, along with additional bedrooms and a dedicated office. The third floor expands the living space with a playroom, guest bedroom, additional bedroom, and a second office. Above the detached garage, a large studio provides further versatile space.

Since 2021, the home has been lovingly maintained by current owners JC and Ashley Mills, who reside here with their three children, ages 10, 6, and 5. Personal touches, including artwork from a family trip to France are displayed on the third floor, adding warmth and individuality.

**Historical Note:** Pelham is known for its many Shingle Style homes, a category in which 215 Loring generally fits with its understated elegance, restraint in excessive ornamentation, protruding bay, and overall asymmetric plan. The architect is unknown, but variations from the form usually found in Pelham suggest it was not one of the usual suspects.

The base of the house, instead of typical heavy stone, is brick with unusual sweeping uprights and whimsical terra cotta insets. The casement windows are also atypical, with leaded glass transoms across most of the house. These are mimicked in the french doors in the living room and the full casements and doors of the grand dining room, where the transoms are enhanced by fantastic armorial, stained glass insets. The woodwork in the foyer (painted for many years) is almost certainly American Chestnut, which was universally used in the timeframe many years before a blight caused the trees to become completely extinct.



### 3

## Charmer in the Manor 427 Fowler Avenue Lauren and Rob Kanzer

Follow the redbrick path to this timeless treasure - an exquisite 1908 Victorian-style home that blends historic elegance with thoughtful modern updates. The home includes six bedrooms, four fireplaces, and four-and-a-half baths across a richly detailed interior. From the moment you enter, the home's original leaded glass windows, beautifully preserved floors, and refined millwork tell a story of craftsmanship and artistry.

The main level is defined by its seamless flow and airy openness, as the dining room transitions effortlessly into the kitchen and living spaces. The kitchen is bright and inviting, with high ceilings and a skylight that fills the room with natural light, enhancing the home's open, connected feel. Just beyond, a screened porch extends the living area outdoors, offering a tranquil setting for al fresco dining overlooking the backyard. Off the living room is a family room added by a previous owner, once used as a yoga studio. Today, the room serves as a cozy retreat, surrounded by windows and enriched with deep green wood paneling.

The lower level continues the home's warmth and versatility, featuring a freshly remodeled family room with custom built-in bookcases and a cozy sectional, making it an ideal space for entertaining or relaxed evenings at home.

Since moving in during 2022, current owners Lauren and Rob Kanzer have infused the home with new life, incorporating unique pieces and one-of-a-kind artwork throughout. A striking bubble glass chandelier captures your attention immediately upon entry, setting the tone for the home's artful blend of old and new. In the front room, an antique settee was custom upholstered to perfectly match the floral wallpaper, which together complement the natural foliage framed by the bay windows. Outside, a large, distinctive rock in the front garden serves as a memorable and organic focal point—adding yet another layer of character to this truly special residence on Fowler.

**Historical Note:** This home was originally a variation on an “American Four Square” design, consisting of four rooms on the first floor with an additional two side wings. The first floor front rooms all remain intact: the foyer with side parlor and the dining room (originally the living room) with an adjoining breakfast room. In the original design, the current living room was the dining room, and the room beyond the foyer would have been the kitchen. The house was extended to the rear and the rooms rearranged to their current configuration.

The house retains many of its historic and architecturally important details, including its original staircase and balustrade, long-leaf yellow pine flooring, leaded glass windows in the front rooms as well as the staircase landing, and exquisite, original double-hung windows with pointed arch muntins throughout the second floor.



328 Cliff Ave, The Taylor House - formerly McClellan - site of Old Pell House, Wm. Montgomery, glass slide photograph, 10/25/1924 (Digitized 2016; re-touched 2021)



For more information on the Art and Furnishings at 328 Cliff Avenue, scan the QR codes.

## 4

### Historical Edwardian on the Cliff 328 Cliff Avenue Erica and Andrew Holborn

Perched high upon the aptly named Cliff Avenue sits one of Pelham's most breathtaking and historic homes. This extraordinary 1914 Edwardian residence has been pristinely maintained and includes an original tile roof, 99 original leaded glass windows, and beautifully preserved wood floors that echo over a century of history. Spanning an impressive 7,100 square feet, the home offers eight bedrooms, four full baths, two powder rooms, and six fireplaces, creating a sense of grandeur balanced with warmth and livability.

Rich in both architectural beauty and historical significance, the home carries a storied past. It was once the embassy of the island nation of Barbados, a legacy still visible today in the original bedroom door knockers used by staff. Prior to that, the residence belonged to William E. Robinson, the publisher of the New York Herald Tribune and later chairman of Coca-Cola, who famously hosted President Eisenhower during the 1950s. Neighbors from the time, like JLP Past President, Betty Bucher, recall Eisenhower walking his Scottish Terrier along the Cliff Avenue sidewalks with the Secret Service in tow. Adding to its lore, George Washington is also said to have stayed on the property, in a home that predated the current house, further cementing its place in history.

Today, the home is a masterful blend of preserved elegance and modern sophistication, thoughtfully reimaged by Dufner Heighes. A stunning, sun-soaked kitchen designed by Bilotta serves as the heart of the home, while vibrant wallpapers and a carefully curated collection of art bring energy and personality to every room. A dramatic staircase adorned with stained glass windows and a charming window seat leads to the second floor, where the primary suite features an attached sunlit sitting room, alongside a playroom and two children's bedrooms. A separate staircase ascends to the third floor, offering two home offices and a guest suite with two private bedrooms.

Now home to Erica and Andrew Holborn and their two children, this remarkable residence continues to be a place where history, beauty, and modern family life come together in perfect harmony.

**Historical Note:** The site was the location of a home built in 1750 (destroyed in 1888) by descendants of Thomas Pell. The Pells chose this spot on one of the highest points in the area with expansive views across Pelham to the LI Sound and all the way to Manhattan. The home passed to Colonel Philip Pell III, who served as Deputy Judge Advocate General under General Washington during the Revolutionary War. Pell rode triumphantly with Washington into NYC the day the British evacuated the city at the end of the war. The original chimney stone is installed in a memorial to Colonel Pell located at the entrance of PMHS. After the war, Washington slept at that home on several occasions. Thirty-three presidents later, Dwight Eisenhower would return to the same spot in Pelham to sleep in the home that now occupies the site.



For more information about John McGraw, scan the QR codes.

## 5

### Home of a Legend

620 Ely Avenue

Christine Kaculis and Josh Weinman

Christine and Josh first discovered Pelham in Costa Rica, of all places, where their young son struck up a friendship with another child in the pool. The families began talking, and it wasn't long before Christine and Josh found themselves drawn to the charm of this community. In 2025, they made Pelham home, settling into 620 Ely Avenue with their two children.

Built in 1923, this stately two-story center hall Colonial offers four bedrooms and four bathrooms across 3,864 square feet. Soon after moving in, the family undertook a striking exterior transformation. The original red brick façade was reimagined into a crisp white finish, accented by bold black details and a distinctive sage green front door, an elegant update that blends modern elegance with the home's classic architecture.

Inside, the first floor features a thoughtful, inviting layout rich in character. The stained glass windows along the staircase and flanking the front door (visible from the powder room) really drew the couple in. The living room, anchored by the home's original fireplace, flows seamlessly into a light-filled sunroom. Just off the dining room is a color-drenched office that was originally a screened-in porch. The kitchen and great room open directly to an outdoor patio, creating an easy flow for everyday living and entertaining. In winter, the backyard hill becomes the neighborhood sledding spot.

Throughout the home, bold design choices and curated artwork bring vibrancy to the historic space. In the living room, one intriguing piece reveals the image of a woman who was once the ping-pong champion of China. Striking wallpaper and lively color palettes add a modern and fresh touch to the home. An ornate central staircase leads to the second floor, where four bedrooms are located.

**Historical Note:** Beyond its architectural charm, 620 Ely Avenue holds a remarkable place in baseball history. The home was once owned by John J. McGraw, the legendary manager of the NY Giants and former third baseman for the Baltimore Orioles. McGraw managed the Giants for 31 years and led the team to three World Series championships and 10 National League pennants. He was known as "Little Napoleon" due to his small stature and aggressive managing style.

In 1920, McGraw and his wife, Blanche, moved to Pelham Manor and their home at 915 Edgewood Avenue was a gathering place for many notable figures in baseball. Ten years later, the McGraws moved to 620 Ely Avenue. When McGraw passed away in 1934, his body was brought back to 620 Ely Avenue and laid before the very fireplace that still stands today. Tributes arrived from around the nation, and the Manor's snow-clogged streets were overrun with mourners. McGraw was inducted into Baseball's Hall of Fame in Cooperstown in 1937.



## **Historical Highlights of Pelham**

**A**

**Historic marker at Pelham Memorial High School  
of Colonel Philip Pell**

**B**

**Historic marker at Ingall's Field**

**C**

**Historic marker at Glover Field**

**D**

**Historic marker at Prospect Hill School**

**E**

**Pelham Dale**

**F**

**Town of Pelham Public Library**

**G**

**St. Paul's Church National Historic Site**

**H**

**Bartow-Pell Mansion Museum**



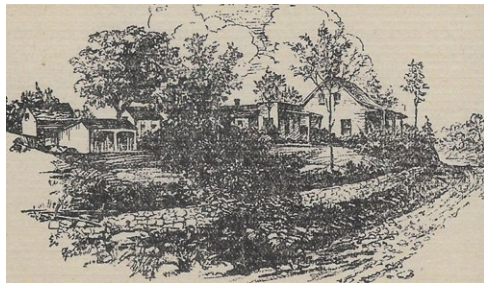
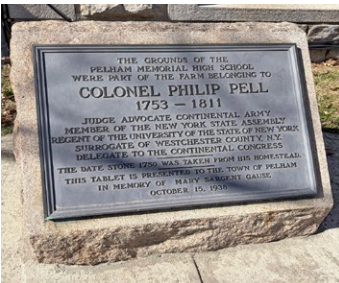
## THE BATTLE OF PELHAM

“October 18, 2026, will mark the semiquincentennial and the often-overlooked battle that saved the American Revolution. In the first months of America’s War for Independence, things were not going well for the rebelling colonies. After a major victory in forcing the British to evacuate their troops from Boston, the British Royal Navy regrouped and landed in New York. After decimating the Americans in the Battle of Long Island, General George Washington and the Continental Army were pushed into a corner in what is now Washington Heights. Hoping to surround them and cut off a retreat north to White Plains, British warships sailed north, eventually landing in the Manor of Pelham. Enter one Colonel John Glover and three other colonels in charge of four regiments, upon whom rested the entire American cause. Had it not been for their courage, determination, and Yankee ingenuity, the British would have marched across Pelham, overtaken Washington and the Continental Army in their retreat to White Plains, and America’s Revolution would have been over.” (Arthur L. Scinta, Pelham Town Historian)

After the House & History Tour, please consider visiting the below historic sites and markers to celebrate the 250th anniversary of America’s Declaration of Independence and The Battle of Pelham.

### A

After the Revolutionary War, Philip Pell III lived in the Pelham home that once stood near Colonial and Cliff Avenues (on the same property that you visited at **328 Cliff Ave**). A stone from the original homestead bears the date of 1750 and is part of the **historic marker at Pelham Memorial High School** as a memorial to Colonel Philip Pell.



*“The Homestead of Colonel Philip Pell. Erected 1750. Cliff and Colonial Avenues, Village of Pelham. Destroyed 1888.”  
Illustration from Ancient Town of Pelham by Lockwood Barr, 1946*

**B**

The **historic marker on Ingall's Field** at the corner of Colonial Avenue and Wolfs Lane marks the location where British troops encamped after the Battle of Pelham.



**C**

The **historic marker at Glover Field** is named in honor of John Glover for his success in the Battle of Pelham.



**D**

The **historic marker at Prospect Hill School** was installed in 1976 at the bicentennial of the Battle of Pelham.



*Photo by Arthur L. Scinta, Pelham Town Historian*

## E

The Pell House (one of only two pre-Revolutionary War houses in Pelham) was the childhood home of Philip, Samuel, and David Pell, who fought on the American side of the Revolution. After the death of David Pell, this home was purchased by James Hay and transformed into the elegant stone residence that he called “**Pelham Dale**”. **Pelham Dale** is located at 45 Iden Ave at the intersection of Iden Avenue and Murray Street.



*Pelhamdale, home of David J. Pell.  
Courtesy of the Westchester County Historical Society.*

## F

The building that houses today’s **Town of Pelham Public Library**, located at 530 Colonial Avenue, was originally a church built by the congregation of the First Church of Christ Scientist, Pelham. After almost 60 years of worship in the building, the congregation made the decision in 1994 to dissolve the parish and after a \$1.9 million capital campaign led by Friends of the Town of Pelham Public Library, the property was purchased and underwent a substantial renovation to make the facility what it is today. The Town of Pelham Public Library officially opened its doors on September 16, 1995. Please visit the Library’s new exhibit, “The Pells in the Revolution: A Family Divided” including a display of a cannonball actually fired during the Battle of Pelham.



## G

**St. Paul's National Church National Historic Site** is located at 897 South Columbus Avenue in Mount Vernon. The site offers tours and educational exhibits, including a diorama of the Battle of Pelham. The diorama, created by artist-historian John R. Wright, visually reconstructs the battle in miniature and shows the positions of John Glover's men behind stone walls. The church was used as a field hospital during the Revolutionary War. Brothers Philip Pell III (1753–1811), Samuel Tredwell Pell (1755–1786), and David Jones Pell (1760–1823) are all buried at St. Paul's Church National Historic Site.



## H

**Bartow-Pell Mansion Museum** on Shore Road in Pelham Bay Park was built around 1840 by a Pell descendant very near the location of the original 17th century Manor House of the Lords of Pelham, which was reportedly looted and burned during the Revolutionary War. Aaron Burr was married to Pelham native Theodosia Bartow Prevost after the war and acquired the estate previously owned by Joshua Pell called the Shrubbery, consisting of approximately 150 acres that extended from the Hutchinson River to Prospect Hill, near what is now the Boston Post Road. His desk remains part of Pelham history and is on display at the museum.



*Secretary desk, ca. 1833. Bartow-Pell Mansion Museum,  
Lent by the New York City Department of Parks & Recreation.*

# Party Like It's 1776!

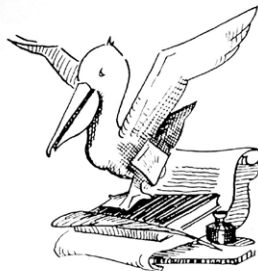
Pelham's many organizations have come together to plan events and parties throughout the year to celebrate the 250th anniversary of the birth of our country and the October 18th Battle of Pelham. Mark your calendars now for what will likely be sold-out events!



## Information courtesy of Arthur Scinta, Town of Pelham Historian

For more information, please visit:

Pelham Town Historian website  
([pelhamtownhistorian.com](http://pelhamtownhistorian.com))



Scan the QR code  
for more  
information  
about the events  
leading up to the  
**Pelham250**  
anniversary!



Proud to once again be a  
Turnkey Sponsor of the semi-annual  
Beautiful Homes of Pelham House Tour

This is always a highlight of the season and a true reflection of what makes this community so special. Pelham is known for its charm and character, and it's events like this that bring it all to life.

If you're interested in exploring a new home or selling yours, I'd love to connect!



**APRIL H. MONACO**



*Real Estate Salesperson*

M 914.548.8350

[amonaco@houlihanlawrence.com](mailto:amonaco@houlihanlawrence.com)

[aprilmonaco.houlihanlawrence.com](mailto:aprilmonaco.houlihanlawrence.com)



Bronxville Brokerage | 2 Park Place | Bronxville, NY  
 o: 914.620.8682 | juliabfee.com

Each Office is Independently Owned and Operated. 🏠

**Holly Mellstrom**  
 LICENSED ASSOCIATE REAL ESTATE BROKER  
 c: 914.224.3867  
 holly.mellstrom@juliabfee.com

**Kristin Bischof**  
 LICENSED ASSOCIATE REAL ESTATE BROKER  
 c: 914.391.6024  
 kristin.bischof@juliabfee.com

**Elizabeth “Beth” Ritchie**  
 LICENSED ASSOCIATE REAL ESTATE BROKER  
 c: 404.423.6414  
 elizabeth.ritchie@juliabfee.com

**MBR**  
 MELLSTROM | BISCHOF | RITCHIE




**Local Expertise.  
 Exceptional Results.**

**Tyson Stephens**  
 LICENSED REAL ESTATE  
 SALESPERSON  
 m: 917.586.2728  
 tyson.stephens@juliabfee.com  
 tysonstephens.juliabfee.com

Bronxville Brokerage  
 2 Park Place, Bronxville  
 o: 914.620.8682

Each Office is Independently Owned and Operated. 🏠

A Proud Historical  
Sponsor of the  
PMHS PTA House  
& History Tour



Sona Davidian

Licensed Assoc. Real Estate Broker

M: 914.552.0252

[sona.davidian@compass.com](mailto:sona.davidian@compass.com)



---

***Eden, Marcos, Inés,  
Stewart, and  
Fernando Rollán***

# Service You Can Stand On

---

---

## CARPET TRENDS

5 Smith Street, Rye, New York 10580 914-967-5188  
info@carpetrends.com, www.carpetrends.com

---



Where Pelham's History  
Comes to Life

Proud Sponsor of the 2026  
House & History Tour

Laura Clemente  
Licensed Real Estate Salesperson  
M: 914.255.7792  
laura.clemente@compass.com

---



# THE DEIGHTON FAMILY

MELISSA - JAMES - SARAFINA - AMELIA

# *Pelham Fans Honoring the Class of 2026*



COMPASS

Proud Sponsor of the  
2026 House  
& History Tour



Lynda Banfield

Licensed Real Estate Salesperson

M: 310.625.8895

lynda.banfield@compass.com

# TIG + me



FRED • LORETTA • HANNAH • JOSHUA

## BRONXVILLE ADULT SCHOOL

SERVING GREATER WESTCHESTER + BEYOND

Fostering a vibrant  
community through  
learning, creativity,  
well-being, and  
connection.

Sign up with a friend and  
learn together.

[BronxvilleAdultSchool.org](https://BronxvilleAdultSchool.org)





Interested in learning about Pelham's historic homes? Find out about our renewed plaque program - and more - online.



*Proud to Sponsor the  
House & History Tour*



**MERIDIAN**  
RISK MANAGEMENT

Personal • Commercial • Life • Benefits

Jeannine Foxx  
jf@meridianrisk.com

Tyler Garrow  
tg@meridianrisk.com

Robert Raniolo, Jr.  
rjr@meridianrisk.com

**Contact Us for a  
No-Obligation Review**

*A Confident Tomorrow Begins Here*



**Entertaining,  
Enriching  
and Inspiring  
the Pelham  
Community  
for more than  
100 Years!**

See What Your Home Is Worth



Call before you list. Call before you decide.



Capital Realty NY  
Maurice Owen-Michaane  
BROKER & OWNER

Phone: (917) 842-5552  
maurice@capitalrealtyny.com



skylight  
KITCHEN

209 Wolfs Ln, Pelham NY 10803  
914-355-7333



WE MAKE THE DIFFERENCE BETWEEN AN ORDINARY VACATION AND AN EXTRAORDINARY ONE™

www.luxurytravelservice.com 914-833-8880 info@baysidetravel.com

**Catherine Levene  
and  
Roger Krulak**

**The  
Breuninger  
Family**



**gld**  
interiors

**ginette lospinoso dean**

gldinteriorsny@gmail.com  
gldinteriorsny.com  
646.942.2236

**Susan Quintin  
&  
Family**



914.740.5900

142 Fifth Avenue  
Pelham, NY 10803

info@basilicopelham.com

basilicopelham.com



**Caroline Baccellieri**  
Licensed Real Estate Salesperson  
caroline.boch@compass.com  
M: 914.804.5685  
O: 914.738.5150  
207 Wolfs Lane, Pelham, NY 10803

COMPASS

**Courtney Burke Maron**  
Licensed Real Estate Salesperson

917.847.2803  
courtney.maron@compass.com

COURTNEY BURKE MARON  
COMPASS

**CROSSTOWN**  
CUSTOM PROJECTS

Michele McInerney  
Concierge Project Management

W 914-740-8833 \* C 914-282-4165

**Blue Dog Wines & Spirits**

ANDY JOHNSON

215 Wolfs Lane,  
Pelham, NY 10803  
tel: 914 738 7220  
fax: 914 738 7204  
web site: [bluedogwines.com](http://bluedogwines.com)  
e-mail: [bluedogwines@gmail.com](mailto:bluedogwines@gmail.com)

**DeCicco  
& Sons**  
QUALITY FIRST

**GOURMET MARKET,  
EVENTS AND CATERING**

ARDSLEY • ARMONK • BEDFORD  
BREWSTER • EASTCHESTER  
HARRISON • LARCHMONT • MILLWOOD  
PELHAM • SOMERS

**DECICCO.COM  
DECICCOEVENTS.COM**

*kristen kells*  
INTERIOR DESIGN

WWW.KRISTENKELLSCREATIVE.COM



COMPASS

Loretta Illustrato  
Lic. Assoc. Real Estate Broker  
loretta.illustrato@compass.com  
M 914.374.3733

207 Wolfs Lane, Pelham, NY 10803



COMPASS

Mary Quintin  
Licensed Real Estate Salesperson  
mary.quintin@compass.com  
M: 914.806.2454  
O: 914.738.5150

207 Wolfs Lane, Pelham, NY 10803



Blue Ribbon Day is May 2nd!

Donate today to enhance the quality of public education for all Pelham students.  
[pelhameducationfoundation.net](http://pelhameducationfoundation.net)



COMPASS

Margaret "Peggy" Nicholson  
Lic. Assoc. Real Estate Broker  
peggy.nicholson@compass.com  
M: 914.643.9570

*"For Experience & Integrity"*

207 Wolfs Lane, Pelham, NY 10803



A creative lab for new work.

In residence at  
The Manor Club.  
[@pelhamfringe](https://www.pelhamfringe.com)



PRISCO  
Orthodontics



Where inspired women-founded brands meet intentional curation.

Follow us:  @THRIVESTUDIONY

Book a class:  [www.thrivestudio.com](http://www.thrivestudio.com)

# With Heartfelt Gratitude To Our Homeowners

Erica and Andrew Holborn

Lauren and Rob Kanzer

Christine Kaculis and Josh Weinman

Steven Showalter and Jeff Davis

Ashley and JC Mills

# With Special Thanks To

Natalia Baklitskaya

Christopher  
Baldassano

Stephanie  
Bostaph Martin

Tia Chase

Alison Cheyne

Tisha Clark

Anna Creighton

Leigh Donnelly

Katie Glantz

Donna Henry

Lisa Hill-Ries

Amanda Jaskiewicz

Adrienne Kiamie

Emma Kirouac

Geraldine Kurtz

LaDonna Lawrence

Alex Loewy

Kelli Macdonald

Iram Majeed

Toby  
Marxuach-Gusciora

Katy Mayer

Kim Melloy

Lupita Mendoza

Maddy Mercer

Julia Nelson

Peggy Nicholson

Monique O'Brien

Estrella Piantini

Rosa Polenzani

Jessica Portal

Karen Pursel

Ashley Ranieri

Danielle Regan

Sonia Ricci

Amy Rios

Charmaine Roper

Lauren Schumacher

Amanda Star

Caden Stobart

Ruth Topol

Tara Turner

Elisa Ulto

Antoinette Vitale

Alicia Washburn

Jaime Webb

Erica Winter

Elena Yu

Rachel Zeiss

## With Additional Thanks To

The PMHS students who gave their time and talents to make this year's fundraising event a success.

John Ansorge, who took drone photographs of each home.

Town Historian Arthur Scinta, who provided a wealth of knowledge about the homes and the history of The Pelhams. To learn more about the Town of Pelham, Village of Pelham and Village of Pelham Manor, please scan the QR codes below to visit the historical archives written by Arthur Scinta and previous Town Historian, Blake Bell. For our Historical Highlights bibliography please email [hhtpelham@gmail.com](mailto:hhtpelham@gmail.com).





### **OUR GOAL**

is to deliver memorable design, digital and print services to our clients and to help them increase their bottom line with great looking design, print and digital products that reflect who they are to the local community and beyond.

#### **Design**

Logos  
Event Collateral  
Postcards & Brochures  
Menus  
Print Ads  
Marketing Materials

#### **Print**

Event Booklets  
Personalized Printing  
Direct Mail  
Signs & Banners  
Postcards & Brochures  
Promotional Items

#### **Digital**

Websites & Web Stores  
Social Media Marketing  
eMail Blasts  
Banner Ads  
Interactive Newsletters  
and more...

**914 738 6066**

info@oidny.com  
525 Fifth Ave | Pelham NY | 10803

COMPASS

# Pelham is Where Your Story Begins.

I'm proud to be a  
Premier Sponsor of  
the Pelham PTA  
House & History Tour,  
celebrating the  
homes, history, and  
community that make  
Pelham so special.



JENNIFER MEYER

Jennifer Meyer  
Licensed Real Estate Salespersons  
jennifer.meyer@compass.com  
M: 914.844.8527



Jennifer Meyer is a real estate licensee affiliated with Compass. Compass is a licensed real estate broker and abides by Equal Housing Opportunity laws.